

Standing Equine Leg CT



Including Q-Care, world-class
support program

Step up to CT designed for your practice

Easy installation, simple room preparation, affordable business models and high quality 3D diagnostic images all from the safest system available.

Whether you are taking the first step to advanced imaging or adding to your current services, Hallmarq's Standing Equine Leg CT (sLCT) provides a safe, convenient, and affordable solution to help evaluate your everyday lameness cases.

With over 20 years of experience in the design, build, service, and support of equine advanced imaging systems, Hallmarq's high quality imaging and world-class Q-Care program are accessible to veterinary practices worldwide.

This unique sLCT system provides you with another diagnostic modality to help deliver a definitive diagnosis and so guide the best treatment for your patients.

Safe. Convenient. Affordable.



Safe

Designed with patient safety as priority, our open, flat platform allows for easy walk-in and walk-out providing the safest environment for the horse during scanning. No general anesthesia is required and the horse handler remains in the room with the patient at all times.



Convenient

With it's unique compact form designed to fit into an existing space, sLCT captures 3D image sets to deliver the complete picture in minutes. The standing, sedated horse can be seen on an outpatient basis and the system operated by your existing staff, trained and supported by Hallmarq.



Affordable

Hallmarq considers the total cost of ownership in its design decisions, providing an affordable solution for your clinic. With flexible purchase options, no hidden costs and inexpensive to run, you can be profitable in as few as 10 cases per month.

Safe

Patient safety

The system is designed specifically with patient safety at the forefront.

Walk-in design

The novel, open, flat platform makes it easy to walk the patient straight onto the scanner and position it for image capture.

Easy exit

Should the need arise, the scan can be paused at any time and the horse walked out of the system to prevent possible injury.

Operator Safety

The horse handler remains in the room, behind a shielded screen, at all times.

Standing procedure

No general anesthesia required; scans are performed on the standing, sedated horse.

Convenient

Easy to install

The compact form makes it possible to fit into your existing space.

Complete picture

Get the complete picture in minutes with information only a 3D data set can provide.

Outpatient procedure

As the horse is only sedated and remains standing, the procedure can be carried out on an outpatient basis. This might be particularly useful in pre-purchase examinations.

Ease of use

Designed with simplicity in mind, operate the system with your existing resources, trained and remotely supported by Hallmarq.

In-house image reading

Read images in-house or send for teleradiology, if preferred.

Short scan time

Capture 3D image sets in 60-second scan times, simple user-interface, as easy to run as digital x-ray.

Walk-in design for patient safety



“The combination of MRI and CT was a useful tool to have and helped with surgical planning and decision making.”

*Elizabetta Giorio, DVM, Cert AVP, MRCVS,
Donnington Grove Equine Vets.*

Affordable

Profitable
Profitability can be achieved in as few as 10 cases/ month.

Flexible purchase options
The system is priced for outright purchase or monthly payments, depending on your business objectives.

No hidden costs
Updates and maintenance are included in set monthly fees.

Low running costs
Low running costs with standard power – no 3-phase service required.

Full support
As part of our exclusive Q-Care program, you are fully supported before, during and after your system installation to help remove some of the risks associated with implementing a new service.

Why cone beam technology?

60 second scan times
Short acquisition time reduces patient movement artifact.

See more
Sub-millimeter resolution makes CB technology ideal for fine detail required in distal limb imaging.

Clinic power
Standard power requirements only, no 3 -phase service required.

Safety first
Reduced radiation and shielding requirements compared to conventional fan beam CT.

Financially viable
Reduced installation and running costs compared to conventional fan beam CT.



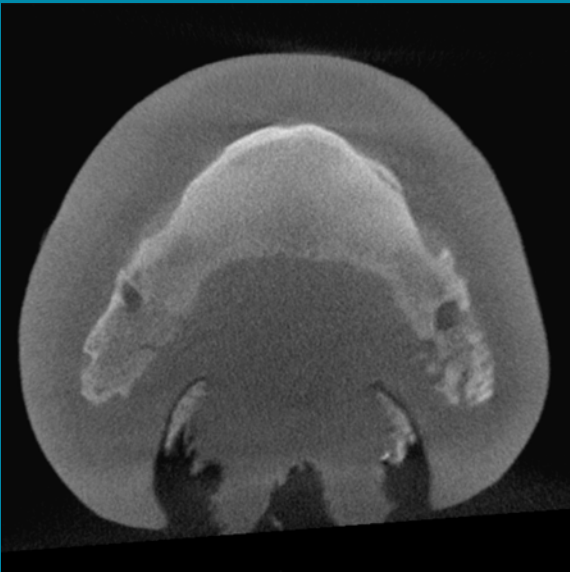
Positioning the patient

“Standing Leg CT has helped with surgical planning and provided useful information on the bone margin.”

Alison Fairburn, Specialist in Diagnostic Imaging, Bell Equine Veterinary Hospital.



Reviewing scans



Experience a new level of care.

Q-Care delivers unique solutions to support your practice, reduce risk and help drive business growth. We include things you might pay extra for with other systems.



Complete care with your practice in mind

Gain a competitive advantage through Q-Care, Hallmarq's world-class support program, our commitment to supporting your practice at no extra cost.

Start-up
Hit the ground running as we bring 20 years of experience to your installation process, including on-site and remote operator training and certification.

Remote Support
Our team of experts are dedicated to supporting your system and are here to help with real time queries and assist in emergencies.

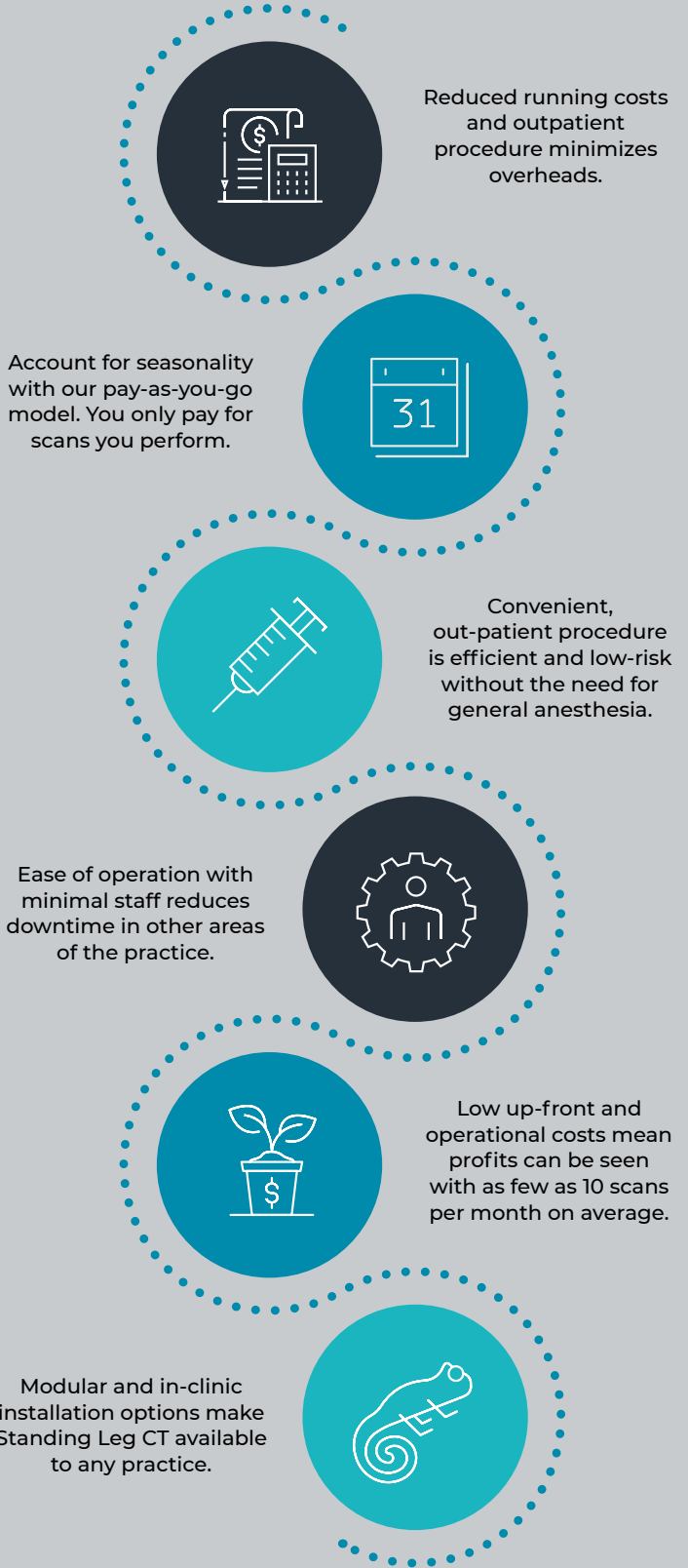
Marketing support
We are here to support your local marketing efforts. From launching your new advanced imaging service to assisting with targeted campaigns to expand your existing practice.

Join our exclusive community
As a member of the Hallmarq family, you will have access to annual user meetings, training materials, webinars, case study libraries and peer group discussions to help support your business.

Experience the difference of a company committed to your success.

“Hallmarq has consistently provided us with quality, leading-edge equipment, fantastic hands-on training for our staff, and excellent remote customer service.”

*Dr. Maureen Kelleher DVM, DACVS,
Virginia Tech Marion duPont Scott Equine Medical Center, VA*



Hallmarq

Advanced Veterinary Imaging

Improving the lives of animals and
the people who care for them.

Hallmarq Veterinary Imaging, Inc.

1275 W. Roosevelt Rd., Suite 105, West Chicago, IL 60185, USA
978.274.0433

Hallmarq Veterinary Imaging, Ltd.

Unit 5, Bridge Park, Guildford, Surrey, GU4 7BF, UK
+44 (0)1483 877812

hallmarq.net



©Hallmarq Veterinary Imaging 2021

sICT with Q-Care NAM V20210624