



Hallmarq
Visionary Veterinary Imaging

CT-ING IS BELIEVING

With Vision CT the diagnostic picture comes alive



VisionCT
Standing Equine Leg CT

Seeing leads to believing

See the picture come alive in your practice

Whether you are taking the first step to advanced imaging or adding to your current services, Hallmarq's Vision CT provides a safe, effective, and affordable solution to help evaluate your everyday lameness cases.

With over 20 years of experience in the design, build, service, and support of equine advanced imaging systems, Hallmarq's high quality imaging and world-class Q-Care programme are accessible to veterinary practices worldwide.

Modular and in-hospital installation options, minimal site preparation, and high-quality 3D diagnostic images all from the safest system available.

Increasingly adopted as the modality to deliver the complete picture, Vision CT aids a definitive diagnosis and so guides the best treatment for your patients.

Safe. Effective. Affordable.

Safe

With patient safety paramount, our easy walk-in-walk-out system provides the safest environment for the horse. The patient is not confined, no general anaesthesia is required and both operator and handler remain in the room throughout.

Effective

Its unique compact form means that sLCT requires minimal space. Modular and in-hospital options enable the fast acquisition of 3D image sets to deliver the complete picture. The standing sedated horse can be seen on an outpatient basis and the system operated by your existing staff, trained and supported by Hallmarq.

Affordable

Hallmarq considers the total cost of ownership in its design decisions, providing an affordable solution for your clinic. With flexible purchase options, no hidden costs and inexpensive to run, you can be profitable in as few as 8 cases per month.

THE FULL SAFETY PICTURE

Patient safety

The system is designed specifically with patient safety at the forefront.

Walk-in design

The open, flat platform makes it easy to walk the patient straight onto the scanner and position it for image capture.

Easy exit

Should the need arise, the scan can be paused at any time and the horse walked out of the system to prevent possible injury.

Operator Safety

Low dose radiation allows the operator and handler to remain in the room.

Standing procedure

No general anaesthesia required; scans are performed on the standing, sedated horse.

THE FULL ERGONOMIC PICTURE

Easy to install

Modular and compact in-hospital options require minimal space requirements or site preparation.

Complete picture

Get the complete picture in minutes with information only a 3D data set can provide.

Outpatient procedure

The standing sedated horse can be seen on an outpatient basis for faster diagnosis.

Ease of use

Simple to operate with just two people, trained and remotely supported by Hallmarq.

In-house image reading

Read images in-house or send for teleradiology, if preferred.

Short scan time

Capture 3D image sets in 60-second scan times, simple user-interface, as easy to run as digital x-ray.

“ Standing Equine Leg CT is now our first port of call for complex proximal sesamoid fractures where we have concerns over configuration. Generating data sets is quick and easy and image resolution can be just as impressive as MRI. ”

Henry O'Neill | Donnington Grove Equine Vets | UK
MVB DVM MS Dipl ACVS MRCVS
American Specialist in Equine Surgery

Walk-in design for patient safety



3D AFFORDABILITY

Profitable

Profitability can be achieved in as few as 8 cases per month.

Flexible purchase options

The system is priced for fixed monthly costs or PAYGO, depending on your business objectives.

No hidden costs

Updates and maintenance are included in monthly fees.

Low running costs

Run your system for less on a standard power supply - no 3-phase required.

Full support

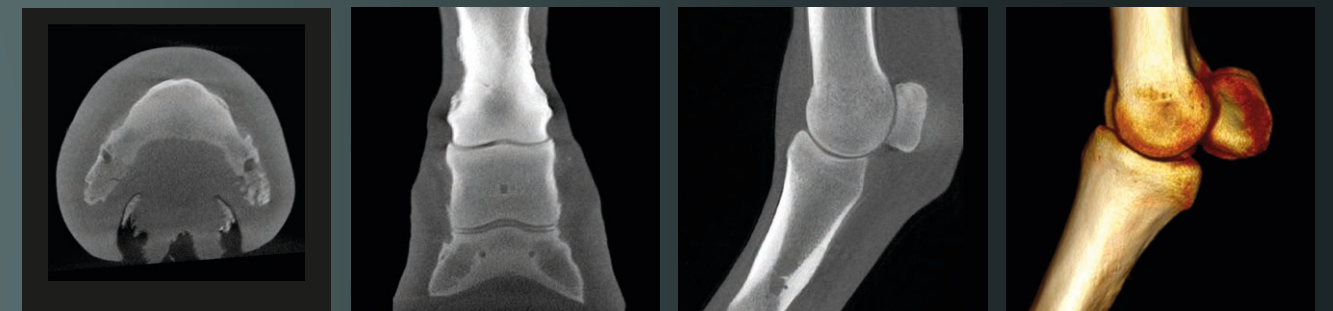
Q-Care customer support is designed to help minimize the risks commonly associated with implementing a new service.



Positioning the patient



Reviewing scans



“ The 3D information generated from Hallmarq’s standing CT has helped us with our diagnoses and provided more information than conventional imaging modalities in many cases already. ”

Alison Fairburn | Bell Equine Veterinary Clinic | UK
BVSc DipECVDI-LA MRCVS
RCVS and European Specialist in Veterinary Diagnostic Imaging

Exceptional support completes the picture

Our **Q-Care customer programme** encompasses the solutions you need to help drive business growth. Proactive support across a range of services is included as standard:



Framed your way

Gain a competitive advantage through Q-Care, Hallmarq's world-class support programme, our commitment to supporting your practice at no extra cost.

Start-up

Hit the ground running as we bring 20 years of experience to your installation process, including on-site and remote operator training and certification.

Remote Support

Our team of experts are dedicated to supporting your system and are here to help with real time queries and assist in emergencies.

Marketing support

We are here to support your local marketing efforts. From launching your new advanced imaging service to assisting with targeted campaigns to expand your existing practice.

Join our exclusive community

As a member of the Hallmarq family, you will have access to annual user meetings, training materials, webinars, case study libraries and peer group discussions to help support your business.

Experience the difference of a company committed to your success.

“Hallmarq stands out as a result of their consistent and reliable personal service, their rapid response to queries and, most unusually, for their desire to teach, train, collaborate and improve on their products.”

Merry Smith | Image Equine | UK
MA Vet MB PhD Cert ES Dip ECVS AECVDI MRCVS



THE BIG PICTURE

Improving the lives of horses
and those who care for them

Hallmarq Veterinary Imaging, Ltd.

Unit 5, Bridge Park, Guildford, Surrey, GU4 7BF, UK
+44 (0)1483 877812

Hallmarq Veterinary Imaging, Inc.

1275 W. Roosevelt Rd., Suite 105, West Chicago, IL 60185, USA
+1 978-266-1201

Email equine@hallmarq.net

We speak vet at hallmarq.net



Hallmarq

Visionary Veterinary Imaging



VisionCT
Standing Equine Leg CT